



Effluent Pumps



CAPITAL SEPTIC SUPPLY





Features

- Heavy duty cast iron construction
- Continuous duty rated PSC motor
- Recessed vortex cast iron impeller
- Upper and lower ball bearing design
- 3/4" solids handling
- 2" NPT discharge

Specifications

Physical Data:

DISCHARGE SIZE	2" NPT
IMPELLER TYPE	Recessed Cast Iron Vortex
CABLE LENGTH	20'

Liquid Handling:

MAXIMUM LIQUID TEMP.	104°F – Intermittent
ACCEPTABLE PH RANGE	6-8

Temperature:

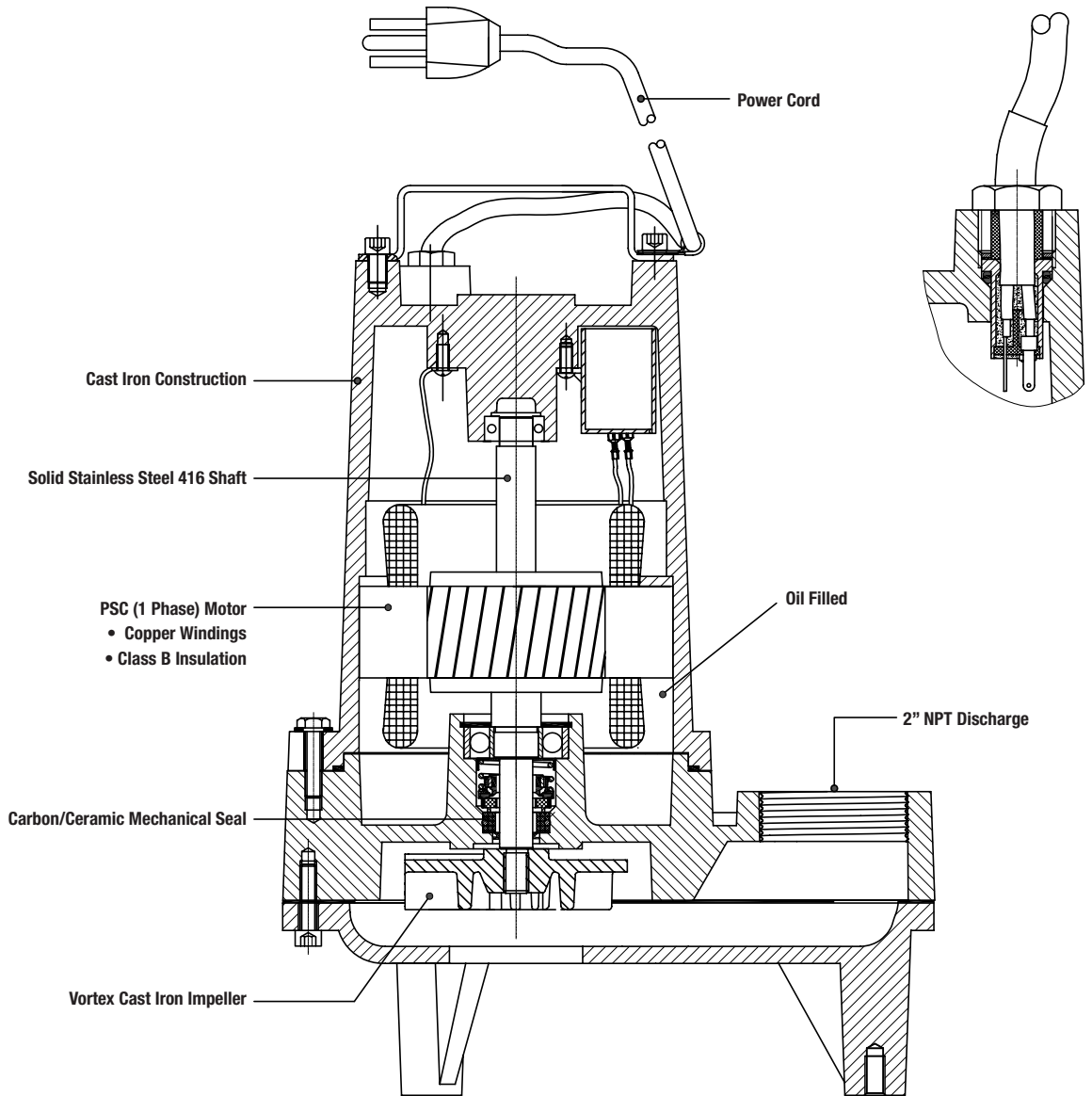
MAXIMUM STATOR	130°C
----------------	-------

Technical Data:

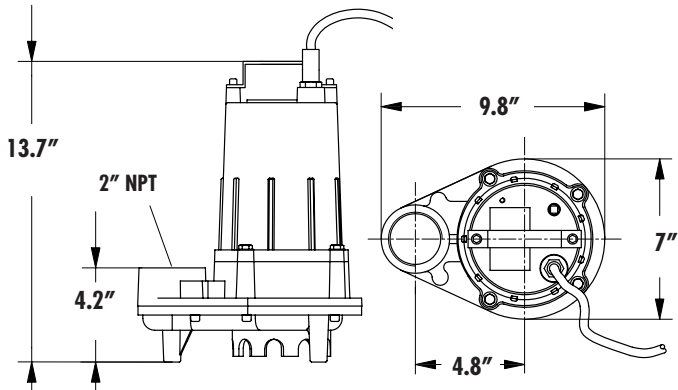
POWER CORD TYPE	SJTW
SENSOR CORD TYPE	16/3C
MOTOR HOUSING	Cast Iron
CASING	Cast Iron
IMPELLER	Cast Iron
MOTOR SHAFT	SS430
HARDWARE	SST
"O" RINGS	NBR
MECHANICAL SEAL	Single Mechanical, Carbon Ceramic
UPPER BEARING	6000
LOWER BEARING	6203

Specifications

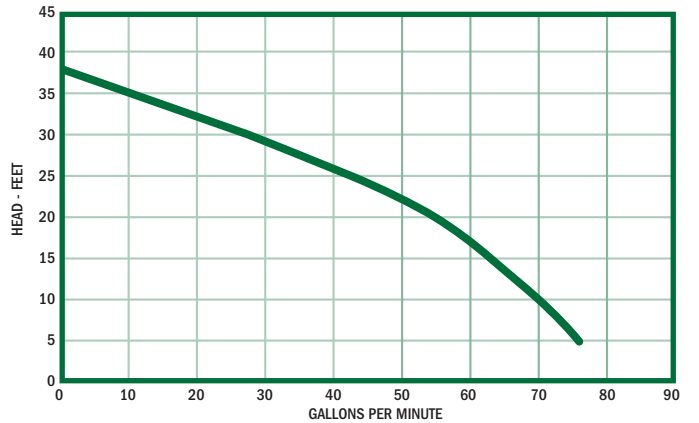
Model	HP	Hz	Volts/Ph	RPM	Full Load Amps	Nema Start Code	Cord Type	Cord Power Size	Cord O.D.
EP40M1-20	4/10	60	115	3450	9.0	P	SJTW 18/3C	16AWG/3C	.34
EP40M2-20	4/10	60	230	3450	4.5	P	SJTW 18/3C	16AWG/3C	.34
EP40W1-20	4/10	60	115	3450	9.0	P	SJTW 18/3C	16AWG/3C	.34
EP40W2-20	4/10	60	230	3450	4.5	P	SJTW 18/3C	16AWG/3C	.34



Dimensions



Performance Curve





Features

- Heavy duty cast iron construction
- Continuous duty rated PSC motor
- Recessed vortex cast iron impeller
- Upper and lower ball bearing design
- 3/4" solids handling
- 2" NPT discharge

Specifications

Physical Data:

DISCHARGE SIZE	2" NPT
IMPELLER TYPE	Recessed Cast Iron Vortex
CABLE LENGTH	20'

Liquid Handling:

MAXIMUM LIQUID TEMP.	104°F – Intermittent
ACCEPTABLE PH RANGE	6-8

Temperature:

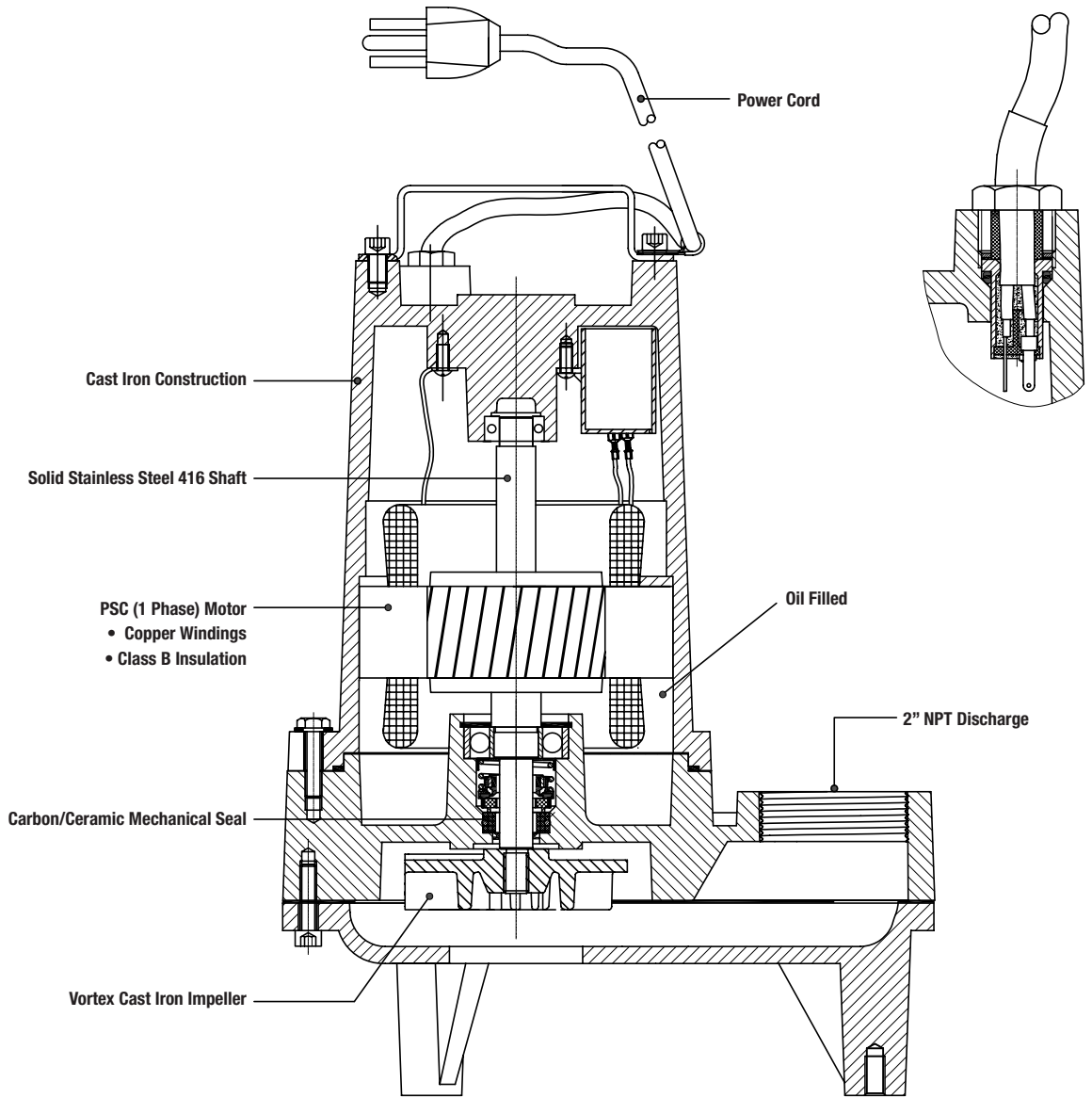
MAXIMUM STATOR	130°C
----------------	-------

Technical Data:

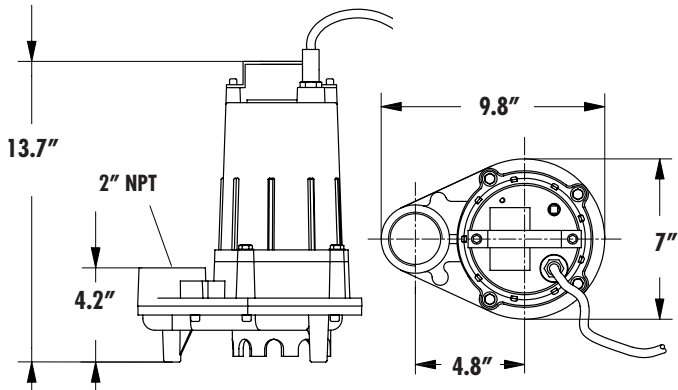
POWER CORD TYPE	SJTW
SENSOR CORD TYPE	16/3C
MOTOR HOUSING	Cast Iron
CASING	Cast Iron
IMPELLER	Cast Iron
MOTOR SHAFT	SS430
HARDWARE	SST
"O" RINGS	NBR
MECHANICAL SEAL	Single Mechanical, Carbon Ceramic
UPPER BEARING	6000
LOWER BEARING	6203

Specifications

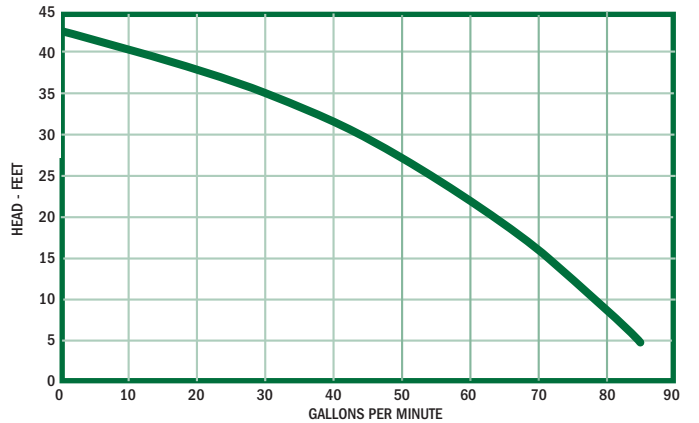
Model	HP	Hz	Volts/Ph	RPM	Full Load Amps	Nema Start Code	Cord Type	Cord Power Size	Cord O.D.
EP45M1-20	1/2	60	115	3450	11.0	P	SJTW 18/3C	16AWG/3C	.34
EP45M2-20	1/2	60	230	3450	5.5	P	SJTW 18/3C	16AWG/3C	.34
EP45W1-20	1/2	60	115	3450	11.0	P	SJTW 18/3C	16AWG/3C	.34
EP45W2-20	1/2	60	230	3450	5.5	P	SJTW 18/3C	16AWG/3C	.34



Dimensions



Performance Curve





EP-50



Features

- Heavy duty cast iron construction
- Oil-filled continuous duty rated PSC motor
- 2-Vane Closed, cast iron impeller
- Upper and lower ball bearing design
- 3/4" solids handling
- 2" NPT discharge

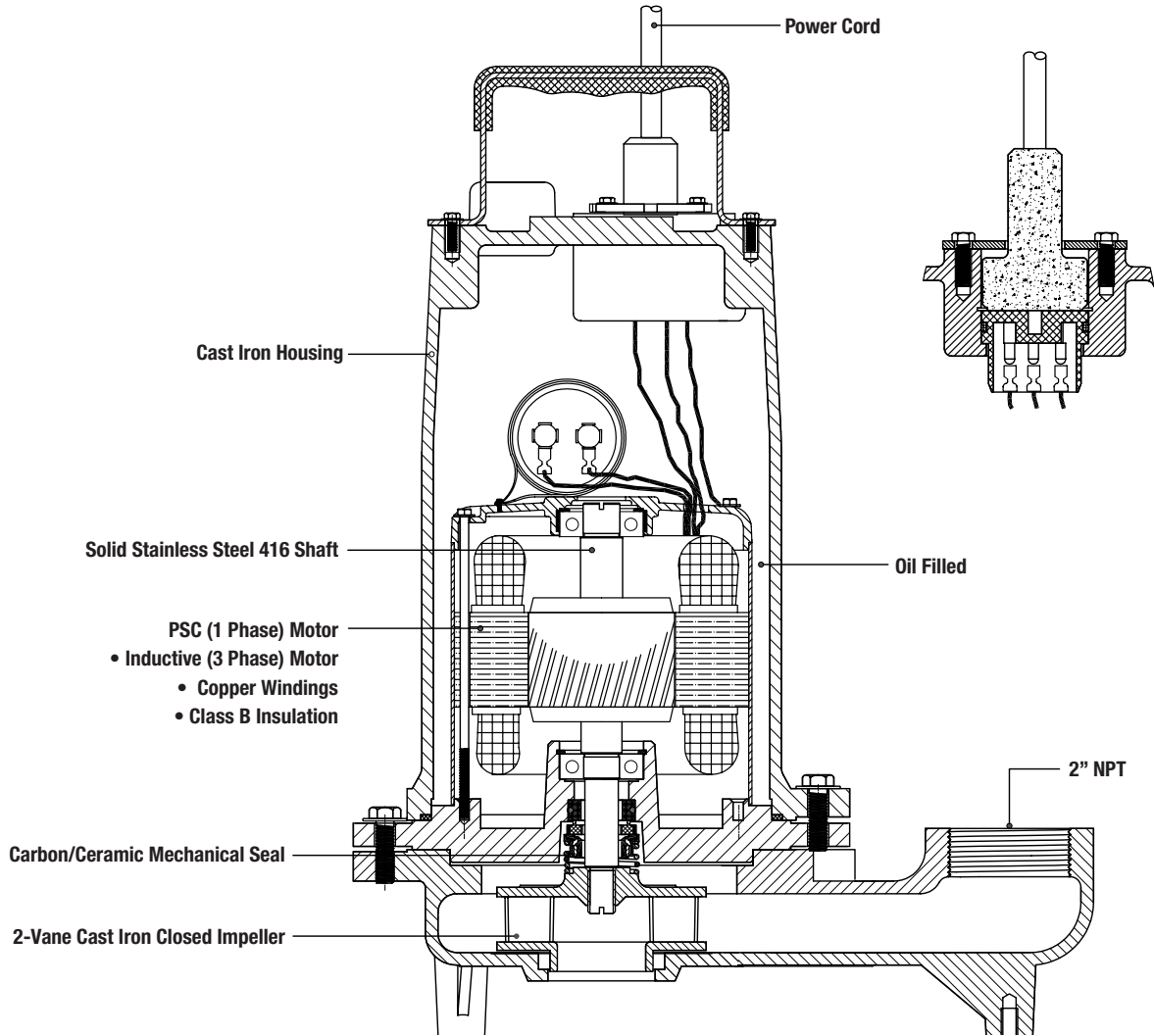
Specifications

Physical Data:	
DISCHARGE SIZE	2" NPT
IMPELLER TYPE	2-Vane Cast Iron Closed
CABLE LENGTH	20'
Liquid Handling:	
MAXIMUM LIQUID TEMP.	104°F – Intermittent
ACCEPTABLE PH RANGE	6-8
Temperature:	
MAXIMUM STATOR	120°C
Technical Data:	
POWER CORD TYPE	SOW
SENSOR CORD TYPE	SOW
MOTOR HOUSING	Cast Iron
CASING	Cast Iron
IMPELLER	Cast Iron
MOTOR SHAFT	SS416
HARDWARE	SST
"O" RINGS	NBR
MECHANICAL SEAL	Single Mechanical, Carbon Ceramic
UPPER BEARING	6203
LOWER BEARING	6203

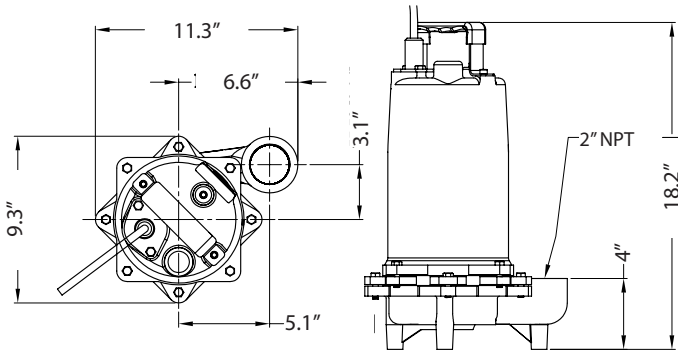
Specifications

MODEL	HP	HZ	VOLTS/PH	RPM	FULL LOAD AMPS	NEMA START CODE	CORD TYPE	CORD SIZE	CORD O.D.	BREAKER SIZE	RUN CAPACITOR
EP50M1-20	1/2	60	115/1	3450	12.0	J	SOW	16AWG/3C	0.385-0.430	15A	370V 35MFD±5%
EP50M2-20	1/2	60	230/1	3450	6.0	J	SOW	16AWG/3C	0.385-0.430	10A	370V 35MFD±5%
EP50M3-20	1/2	60	230/3	3450	3.2	J	SOW	16AWG/4C	0.410-0.460	5A	N/A
EP50M4-20	1/2	60	460/3	3450	1.6	J	SOW	16AWG/4C	0.410-0.460	3A	N/A
EP50M5-20	1/2	60	208/1	3450	6.5	J	SOW	16AWG/3C	0.385-0.430	10A	450V 35MFD±5%
EP50M6-20	1/2	60	208/3	3450	3.5	J	SOW	16AWG/4C	0.410-0.460	5A	N/A

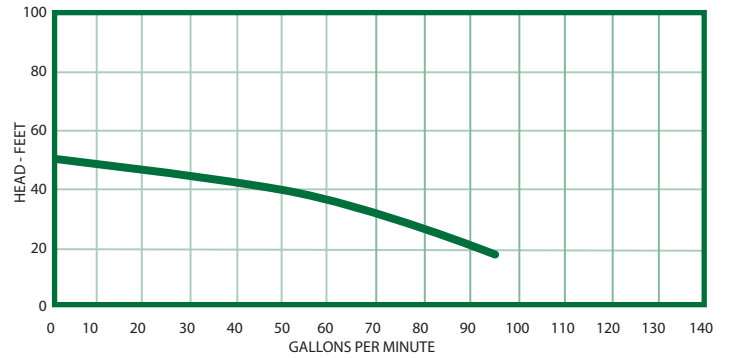
Features



Dimensions



Performance Curve





EP-75



Features

- Heavy duty cast iron construction
- Oil-filled continuous duty rated PSC motor
- Recessed vortex cast iron impeller
- Upper and lower ball bearing design
- 3/4" solids handling
- 2" NPT discharge

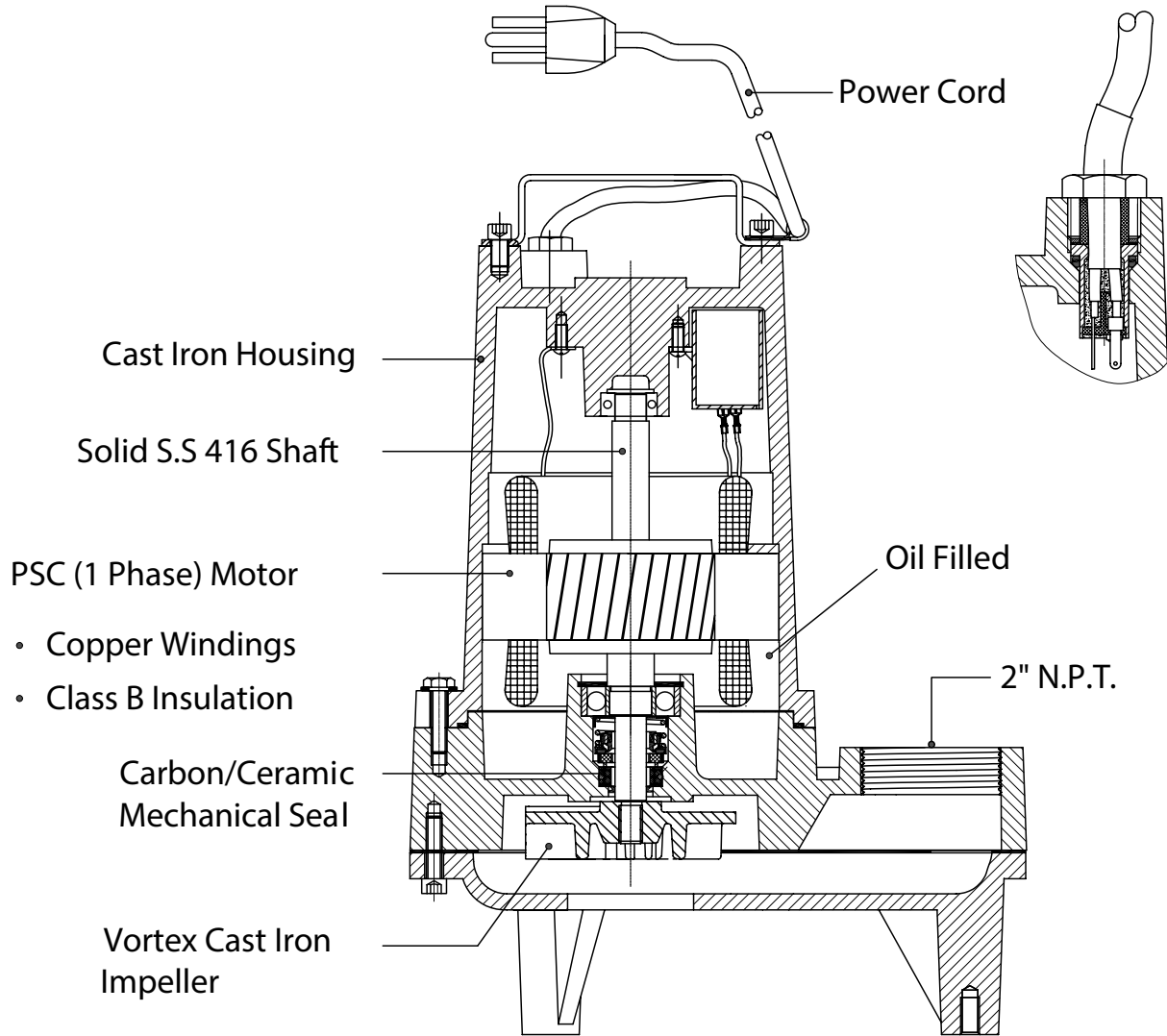
Specifications

Physical Data:	
DISCHARGE SIZE	2" NPT
IMPELLER TYPE	Vortex Cast Iron
CABLE LENGTH	20'
Liquid Handling:	
MAXIMUM LIQUID TEMP.	104°F – Intermittent
ACCEPTABLE PH RANGE	6-8
Temperature:	
MAXIMUM STATOR	130°C
Technical Data:	
POWER CORD TYPE	SOW
SENSOR CORD TYPE	16/3C
MOTOR HOUSING	Cast Iron
CASING	Cast Iron
IMPELLER	Cast Iron
MOTOR SHAFT	SS416
HARDWARE	SST
"O" RINGS	NBR
MECHANICAL SEAL	Single Mechanical, Carbon Ceramic
UPPER BEARING	6203
LOWER BEARING	6203

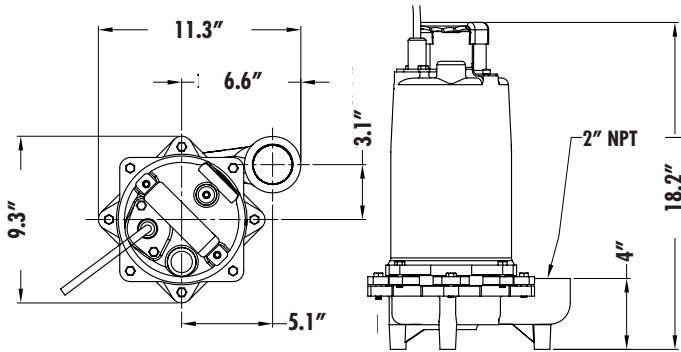
Specifications

MODEL	HP	HZ	VOLTS/PH	RPM	FULL LOAD AMPS	NEMA START CODE	CORD TYPE	CORD SIZE	CORD O.D.	RUN CAPACITOR
EP75M1-20	3/4	60	115/1	3450	13.0	H	SOW	16AWG/3C	0.385-0.430	450V 35MFD±5%
EP75M2-20	3/4	60	230/1	3450	8.0	H	SOW	16AWG/3C	0.385-0.430	450V 35MFD±5%
EP75M3-20	3/4	60	230/3	3450	4.7	H	SOW	16AWG/4C	0.410-0.460	N/A
EP75M4-20	3/4	60	460/3	3450	2.3	H	SOW	16AWG/4C	0.410-0.460	N/A
EP75M5-20	3/4	60	208/1	3450	8.2	H	SOW	16AWG/3C	0.385-0.430	450V 35MFD±5%
EP75M6-20	3/4	60	208/3	3450	5.0	H	SOW	16AWG/4C	0.410-0.460	N/A

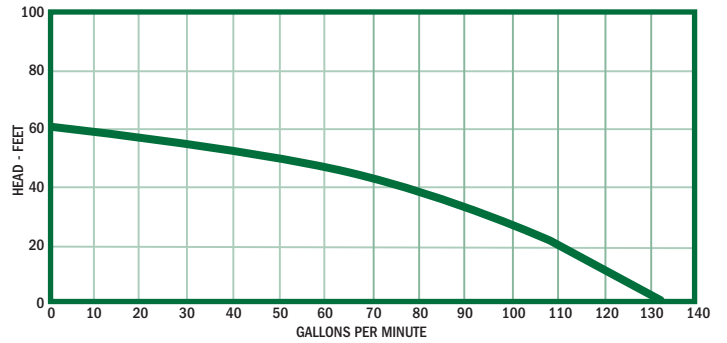
Features



Dimensions



Performance Curve





EP-100



Features

- Heavy duty cast iron construction
- Oil-filled continuous duty rated PSC motor
- Recessed vortex cast iron impeller
- Upper and lower ball bearing design
- 3/4" solids handling
- 2" NPT discharge

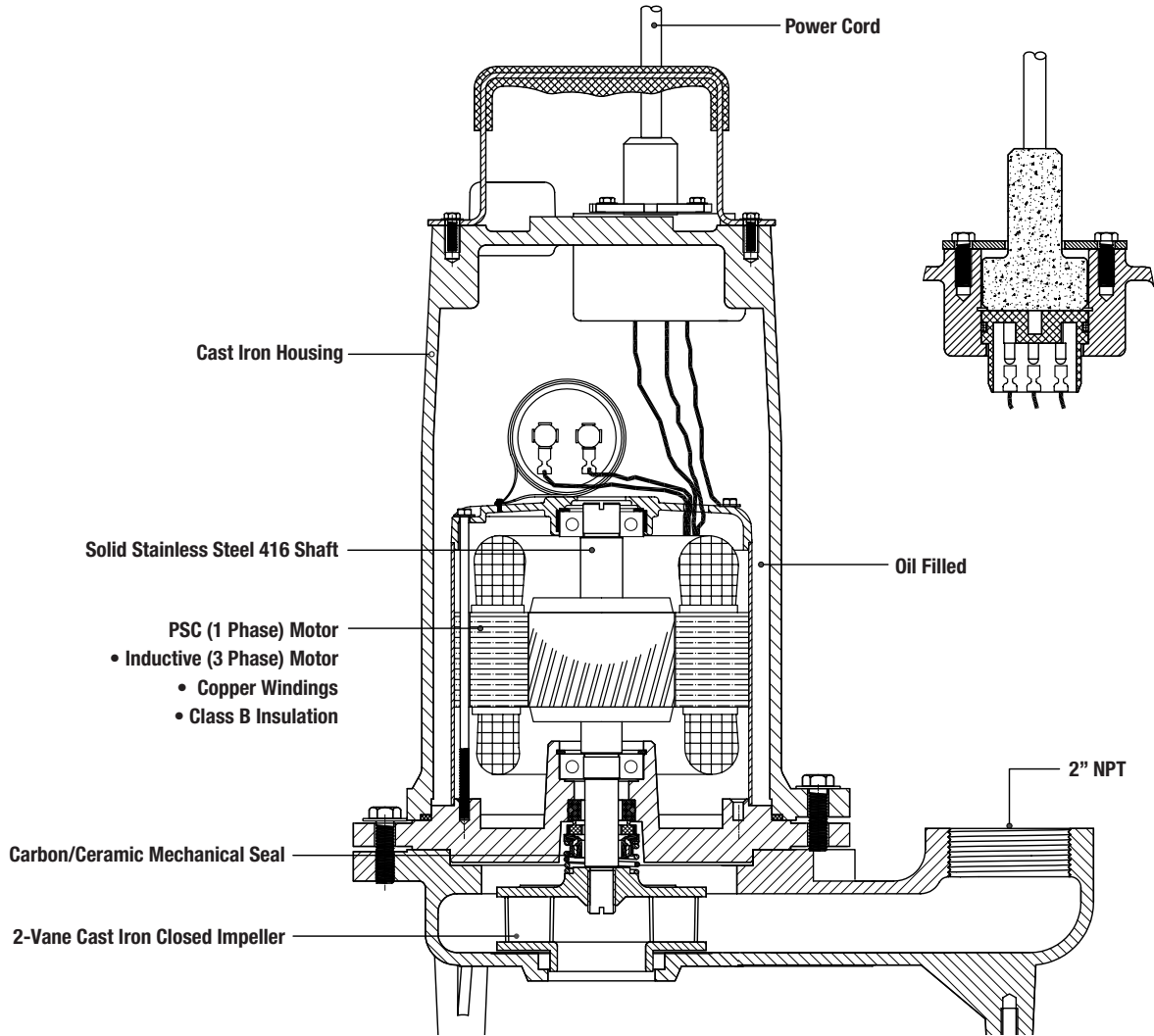
Specifications

Physical Data:	
DISCHARGE SIZE	2" NPT
IMPELLER TYPE	2-Vane Cast Iron Closed
CABLE LENGTH	20'
Liquid Handling:	
MAXIMUM LIQUID TEMP.	104°F – Intermittent
ACCEPTABLE PH RANGE	6-8
Temperature:	
MAXIMUM STATOR	130°C
Technical Data:	
POWER CORD TYPE	SOW
SENSOR CORD TYPE	16/3C
MOTOR HOUSING	Cast Iron
CASING	Cast Iron
IMPELLER	Cast Iron
MOTOR SHAFT	SS430
HARDWARE	SST
"O" RINGS	NBR
MECHANICAL SEAL	Single Mechanical, Carbon Ceramic
UPPER BEARING	6203
LOWER BEARING	6203

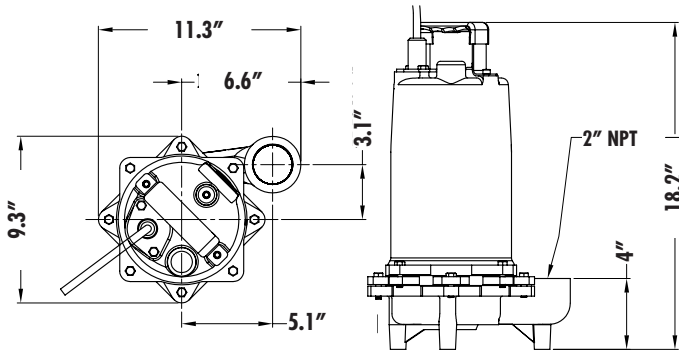
Specifications

MODEL	HP	HZ	VOLTS/PH	RPM	FULL LOAD AMPS	NEMA START CODE	CORD TYPE	CORD SIZE	CORD O.D.	BREAKER SIZE	RUN CAPACITOR
EP100M2-20	1	60	230/1	3450	11.8	H	SOW	16AWG/3C	0.385-0.430	15A	450V 35MFD±5%
EP100M3-20	1	60	230/3	3450	6.0	H	SOW	16AWG/4C	0.410-0.460	10A	N/A
EP100M4-20	1	60	460/3	3450	3.0	H	SOW	16AWG/4C	0.410-0.460	5A	N/A
EP100M5-20	1	60	208/1	3450	12.0	H	SOW	16AWG/3C	0.385-0.430	15A	450V 35MFD±5%
EP100M6-20	1	60	208/3	3450	6.2	H	SOW	16AWG/4C	0.410-0.460	10A	N/A

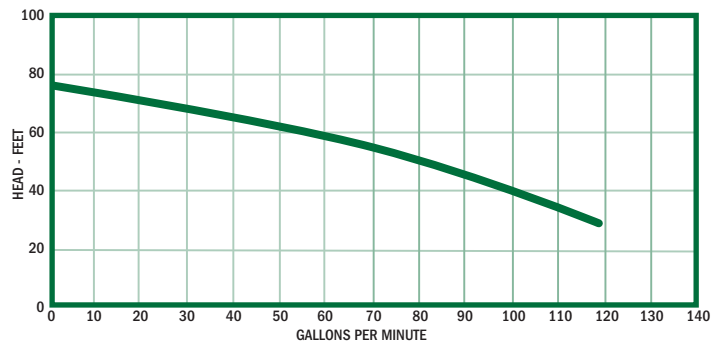
Features



Dimensions



Performance Curve





EP-150



Features

- Heavy duty cast iron construction
- Oil-filled continuous duty rated PSC motor
- Recessed vortex cast iron impeller
- Upper and lower ball bearing design
- 3/4" solids handling
- 2" NPT discharge

Specifications

Physical Data:

DISCHARGE SIZE	2" NPT
IMPELLER TYPE	2-Vane Cast Iron Closed
CABLE LENGTH	20'

Liquid Handling:

MAXIMUM LIQUID TEMP.	104°F – Intermittent
ACCEPTABLE PH RANGE	6-8

Temperature:

MAXIMUM STATOR	130°C
----------------	-------

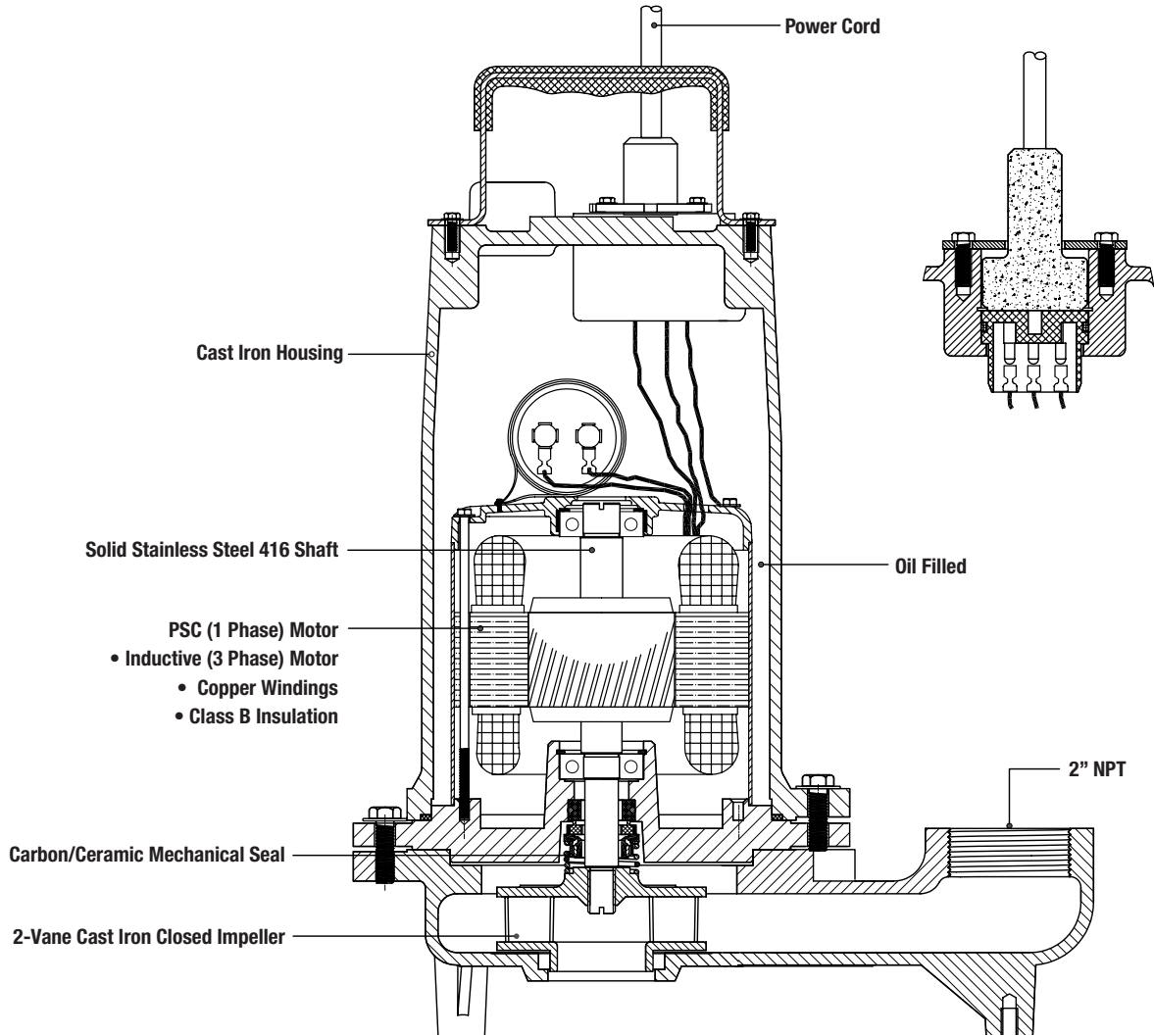
Technical Data:

POWER CORD TYPE	SOW
SENSOR CORD TYPE	16/3C
MOTOR HOUSING	Cast Iron
CASING	Cast Iron
IMPELLER	Cast Iron
MOTOR SHAFT	SS430
HARDWARE	SST
"O" RINGS	NBR
MECHANICAL SEAL	Single Mechanical, Carbon Ceramic
UPPER BEARING	6203
LOWER BEARING	6203

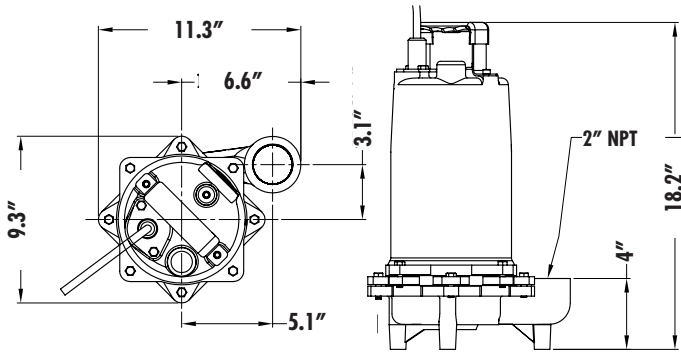
Specifications

MODEL	HP	HZ	VOLTS/PH	RPM	FULL LOAD AMPS	NEMA START CODE	CORD TYPE	CORD SIZE	CORD O.D.	BREAKER SIZE	RUN CAPACITOR
EP150M2-20	1-1/2	60	230/1	3450	15.0	G	SOW	14AWG/3C	0.520-0.575	20A	450V 35MFD±5%
EP150M3-20	1-1/2	60	230/3	3450	7.4	G	SOW	16AWG/4C	0.410-0.460	10A	N/A
EP150M4-20	1-1/2	60	460/3	3450	3.7	G	SOW	16AWG/4C	0.410-0.460	5A	N/A
EP150M5-20	1-1/2	60	208/1	3450	15.2	G	SOW	14AWG/3C	0.520-0.575	20A	450V 35MFD±5%
EP150M6-20	1-1/2	60	208/3	3450	7.8	G	SOW	16AWG/4C	0.410-0.460	10A	N/A

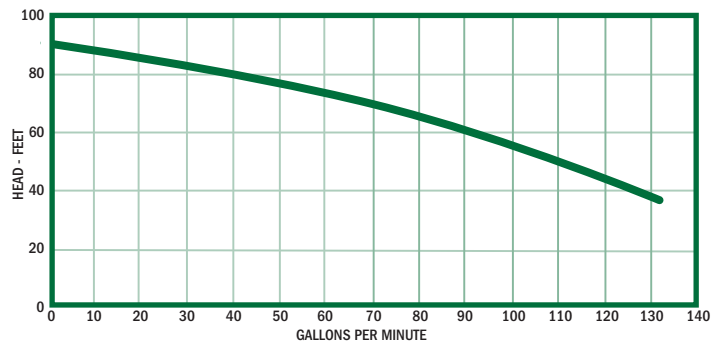
Features



Dimensions



Performance Curve





Features

- Heavy duty cast iron construction
- Continuous duty rated PSC motor
- Recessed cast iron vortex impeller
- 3/4" solids handling
- 1-1/2" NPT discharge

Specifications

Physical Data:

DISCHARGE SIZE	1-1/2" NPT
IMPELLER TYPE	Recessed Cast Iron Vortex
CABLE LENGTH	20'

Liquid Handling:

MAXIMUM LIQUID TEMP.	104°F – Intermittent
ACCEPTABLE PH RANGE	6-8

Temperature:

MAXIMUM STATOR	130°C
----------------	-------

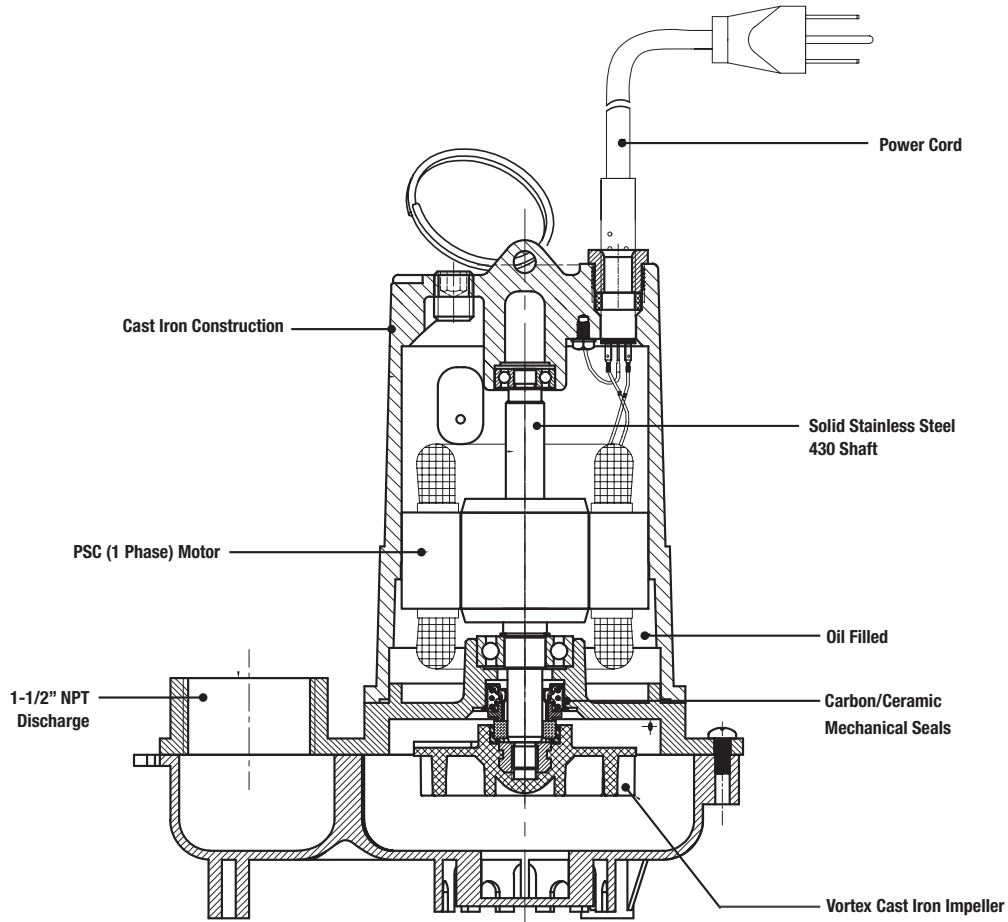
Technical Data:

POWER CORD TYPE	SJTW
MOTOR HOUSING	Cast Iron
CASING	Cast Iron
IMPELLER	Cast Iron
MOTOR SHAFT	SS430
HARDWARE	SST
"O" RINGS	NBR
MECHANICAL SEAL	Single Mechanical, Carbon Ceramic
UPPER BEARING	608-2RZ
LOWER BEARING	6202

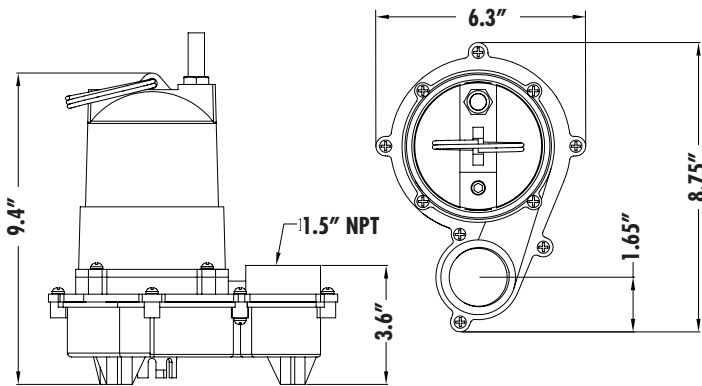
Specifications

Model	HP	Hz	Volts/Ph	RPM	Full Load Amps	Nema Start Code	Cord Type	Cord Power Size	Cord O.D.
EPH30M1-20	3/10	60	115	3450	7.0	P	SJTW	18AWG/3C	.34
EPH30M2-20	3/10	60	230	3450	3.5	P	SJTW	18AWG/3C	.34
EPH30W1-20	3/10	60	115	3450	7.0	P	SJTW	18AWG/3C	.34
EPH30W2-20	3/10	60	230	3450	3.5	P	SJTW	18AWG/3C	.34

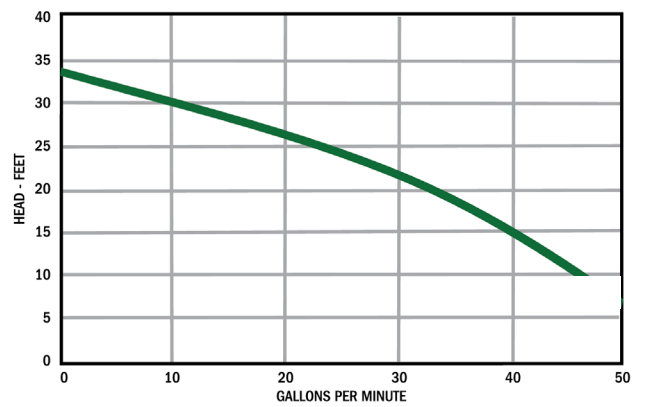
Features



Dimensions



Performance Curve





CAPITAL SEPTIC SUPPLY

The logo is set against a dark blue background that has a curved, wave-like shape on the left side. The word 'Ashland' is written in a white, italicized serif font inside a white oval. Below the oval, the word 'PUMP' is written in a white, all-caps, sans-serif font.

Ashland
PUMP