



Ecopod



Certified to
NSF/ANSI Standards 40 & 245

CAPITAL SEPTIC SUPPLY



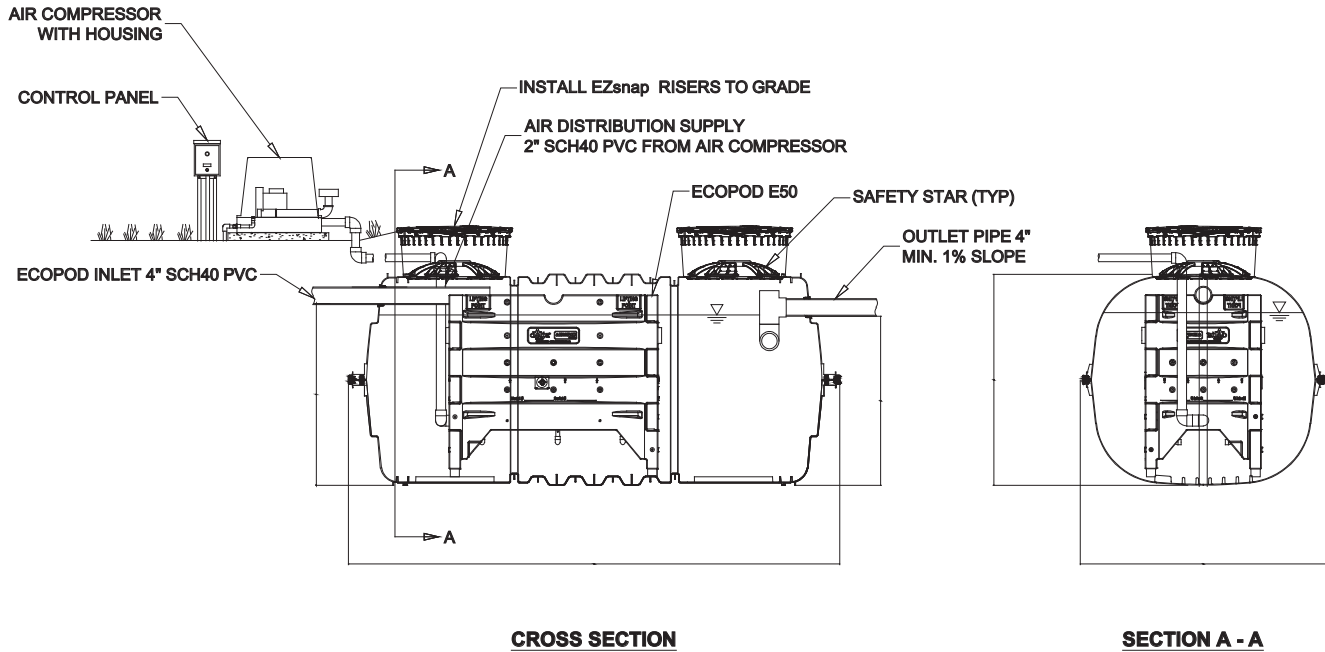


TABLE 1: ELECTRICAL REQUIREMENTS

TREATMENT PLANT	E50N
COMPRESSOR	Delta Model 06
MOTOR FULL LOAD AMPS	4.8
MEASURED OPERATING WATTS	373
ELECTRICAL REQUIREMENTS	115 volt- single phase

TABLE 2: ECOPOD SPECIFICATIONS

TREATMENT PLANT	E50N
TREATMENT CAPACITY (GPD)	500
MIN. PRIMARY TANK VOLUME (GAL.)	500
REACTOR TANK VOLUME (GAL.)	710
MEDIA SIZE	4' X 2' X 2'
AIR REQUIREMENTS	12 CFM

NOTES

1. INSTALL TANK PER PRECASTER INSTRUCTIONS.
2. IF PRECAST DIMENSIONS ARE OUTSIDE THE MINIMUM DIMENSIONS, CONTACT DELTA FOR REVIEW.
3. FOR DESIGNS WITH TREATMENT CAPACITIES GREATER THAN 1,500 GPD, CONTACT DELTA FOR REVIEW.
4. OPTIONAL SCHEDULE 40 PVC INSERT INSTALLED TO RAISE ECOPOD TO INLET AND OUTLET HEIGHT REQUIREMENTS.

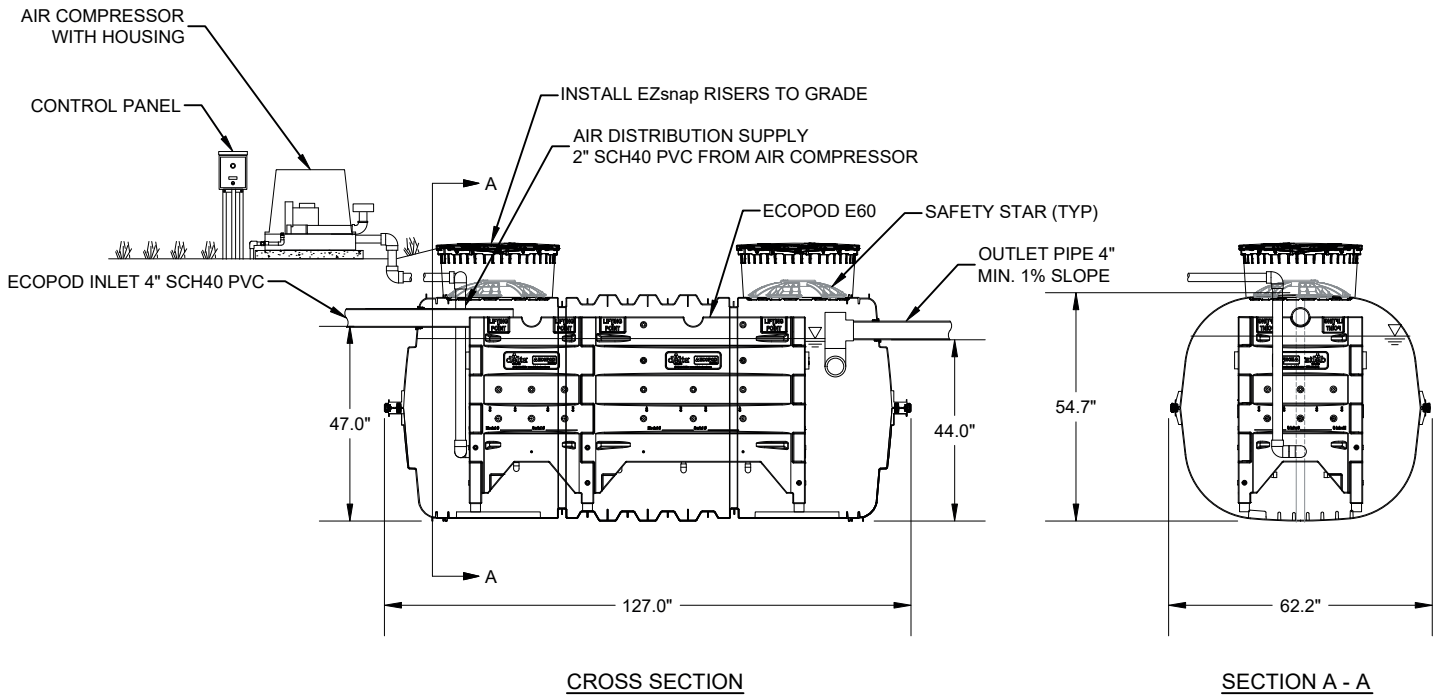


TABLE 1: ELECTRICAL REQUIREMENTS

TREATMENT PLANT	E60N
COMPRESSOR	Delta Model 06
MOTOR FULL LOAD AMPS	4.8
MEASURED OPERATING WATTS	373
ELECTRICAL REQUIREMENTS	115 volt- single phase

TABLE 2: ECOPOD SPECIFICATIONS

TREATMENT PLANT	E60N
TREATMENT CAPACITY (GPD)	600
MIN. PRIMARY TANK VOLUME (GAL.)	600
REACTOR TANK VOLUME (GAL.)	916
MEDIA SIZE	6' X 2' X 2'
AIR REQUIREMENTS	14.4 CFM

NOTES

1. INSTALL TANK PER PRECASTER INSTRUCTIONS.
2. IF PRECAST DIMENSIONS ARE OUTSIDE THE MINIMUM DIMENSIONS, CONTACT DELTA FOR REVIEW.
3. FOR DESIGNS WITH TREATMENT CAPACITIES GREATER THAN 1,500 GPD, CONTACT DELTA FOR REVIEW.
4. OPTIONAL SCHEDULE 40 PVC INSERT INSTALLED TO RAISE ECOPOD TO INLET AND OUTLET HEIGHT REQUIREMENTS.

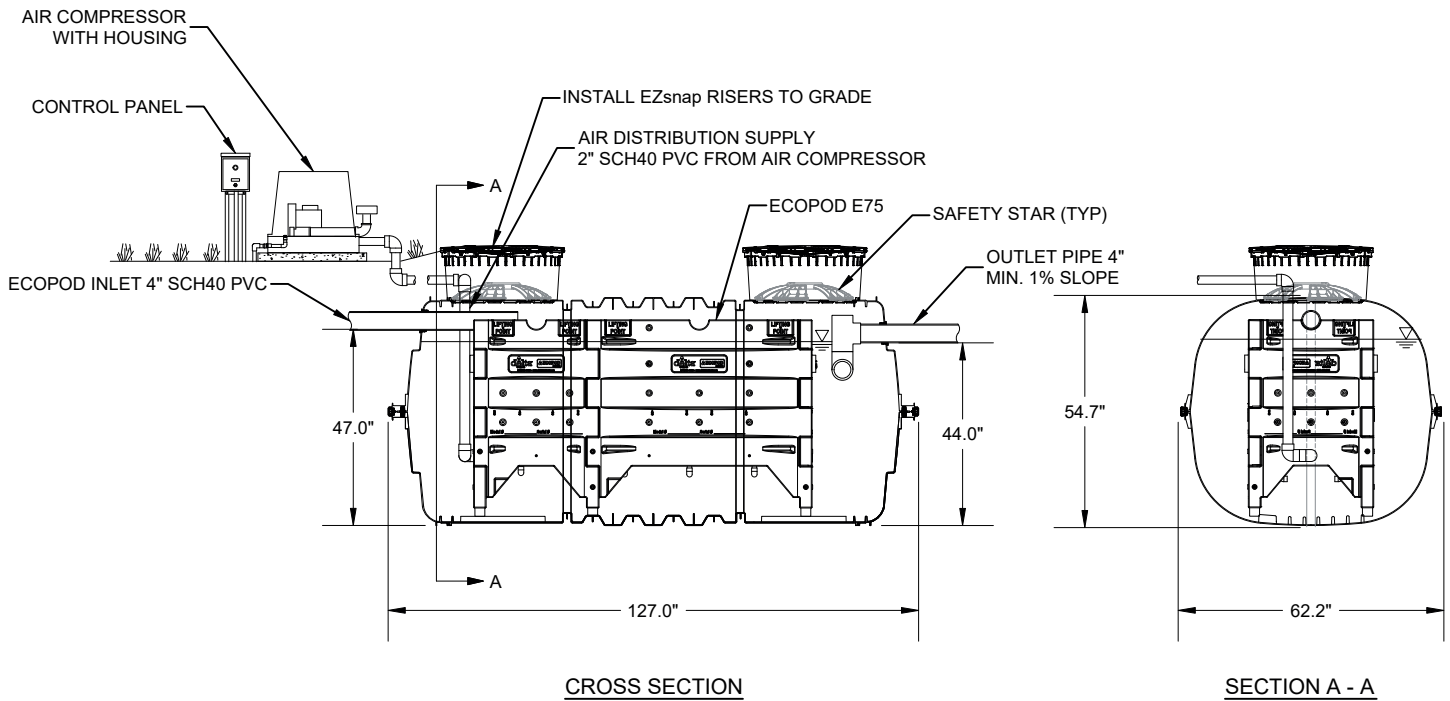


TABLE 1: ELECTRICAL REQUIREMENTS

TREATMENT PLANT	E75N
COMPRESSOR	Delta Model 06
MOTOR FULL LOAD AMPS	4.8
MEASURED OPERATING WATTS	373
ELECTRICAL REQUIREMENTS	115 volt- single phase

TABLE 2: ECOPOD SPECIFICATIONS

TREATMENT PLANT	E75N
TREATMENT CAPACITY (GPD)	750
MIN. PRIMARY TANK VOLUME (GAL.)	750
REACTOR TANK VOLUME (GAL.)	1,090
MEDIA SIZE	6' X 2' X 2'
AIR REQUIREMENTS	18 CFM

NOTES

1. INSTALL TANK PER PRECASTER INSTRUCTIONS.
2. IF PRECAST DIMENSIONS ARE OUTSIDE THE MINIMUM DIMENSIONS, CONTACT DELTA FOR REVIEW.
3. FOR DESIGNS WITH TREATMENT CAPACITIES GREATER THAN 1,500 GPD, CONTACT DELTA FOR REVIEW.
4. OPTIONAL SCHEDULE 40 PVC INSERT INSTALLED TO RAISE ECOPOD TO INLET AND OUTLET HEIGHT REQUIREMENTS.

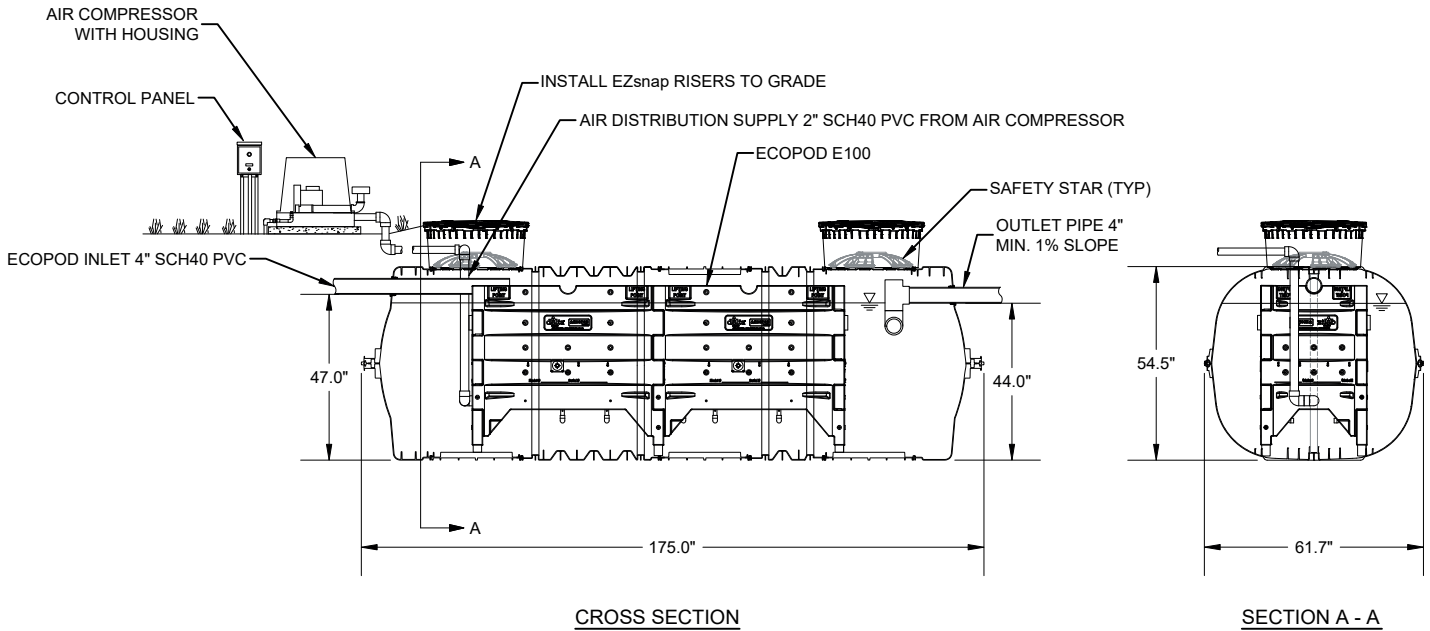


TABLE 1: ELECTRICAL REQUIREMENTS

TREATMENT PLANT	E100N
COMPRESSOR	Delta Model K03
MOTOR FULL LOAD AMPS	9.4
MEASURED OPERATING WATTS	745
ELECTRICAL REQUIREMENTS	115 volt- single phase

TABLE 2: ECOPOD SPECIFICATIONS

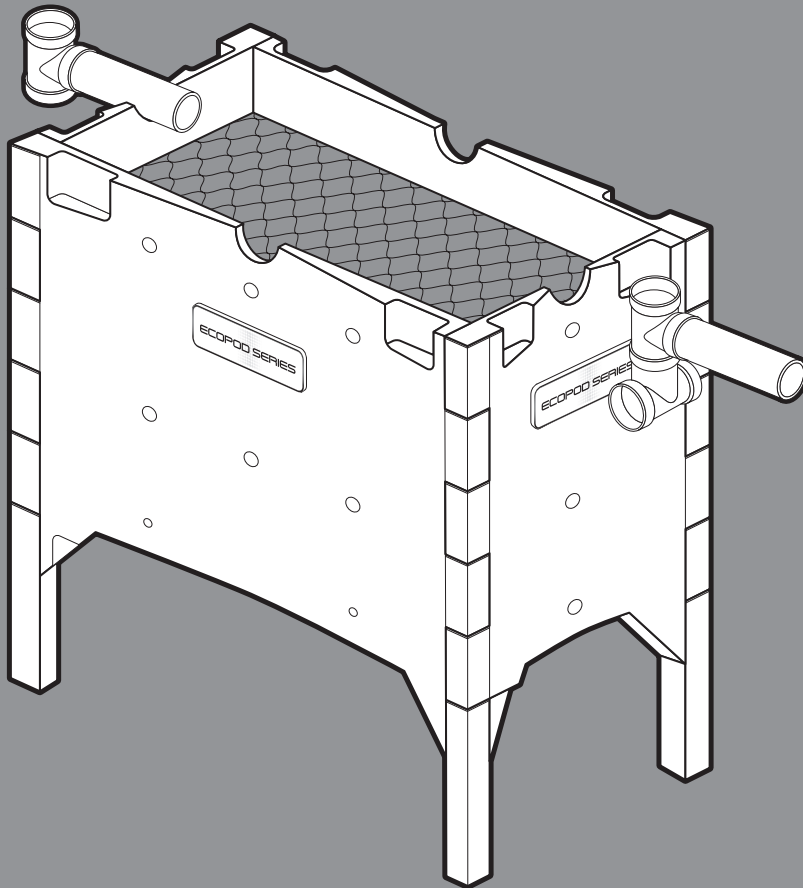
TREATMENT PLANT	E100N
TREATMENT CAPACITY (GPD)	1,000
MIN. PRIMARY TANK VOLUME (GAL.)	1,000
REACTOR TANK VOLUME (GAL.)	1,405
MEDIA SIZE	8' X 2' X 2'
AIR REQUIREMENTS	24 CFM

NOTES

1. INSTALL TANK PER PRECASTER INSTRUCTIONS.
2. IF PRECAST DIMENSIONS ARE OUTSIDE THE MINIMUM DIMENSIONS, CONTACT DELTA FOR REVIEW.
3. FOR DESIGNS WITH TREATMENT CAPACITIES GREATER THAN 1,500 GPD, CONTACT DELTA FOR REVIEW.
4. OPTIONAL SCHEDULE 40 PVC INSERT INSTALLED TO RAISE ECOPOD TO INLET AND OUTLET HEIGHT REQUIREMENTS.



CAPITAL SEPTIC SUPPLY




delta
treatment systems